



Scan the QR Code with your device to view the Linea range and order free sample cuttings.

SPECIFICATIONS

Application: Heavy Commercial/Healthcare/Screens/Outdoor

Martindale Abrasion: Greater than 50,000 rubs

FR Properties AS1530.3: Smoke Developed Index = 5

Colourfastness to Light (ISO 105-B02): 6 - 7

Composition: 85% PVC 15% Polyester

Pattern Repeat: Stripe **Railroaded:** Multidirectional

Width/Roll Length: 137cm/30m

Care Label: C

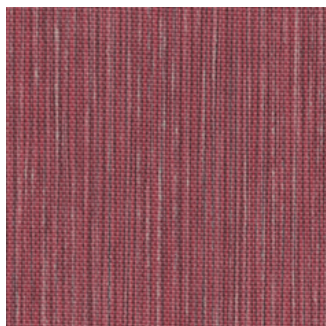
Warranty*: 3 Year

Available Colours: 12

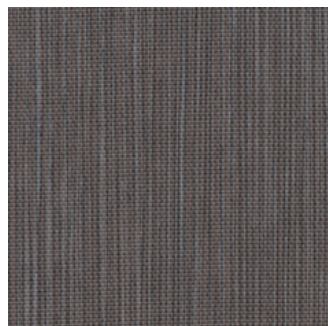
*Conditions Apply

PLEASE NOTE:
WHEN RAILROADED – THE LINE DESIGN RUNS VERTICALLY.
NON RAILROADED – THE LINE DESIGN RUNS HORIZONTALLY.

COLOURWAYS



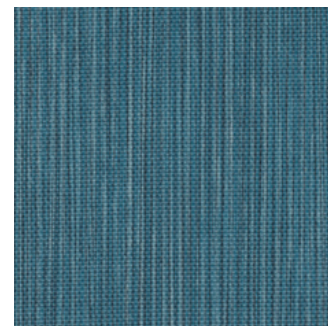
BLOODLINE



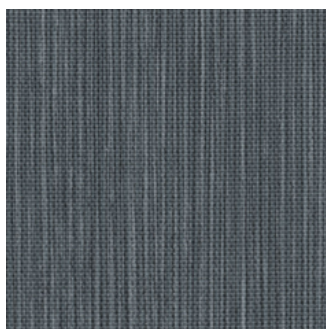
BORDERLINE



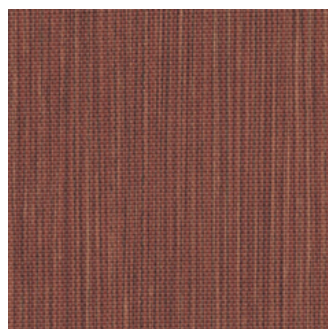
COASTLINE



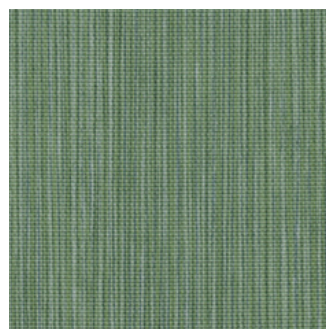
CRUISELINE



DEADLINE



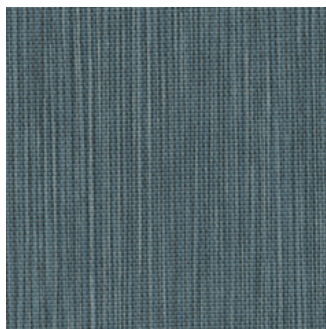
HOTLINE



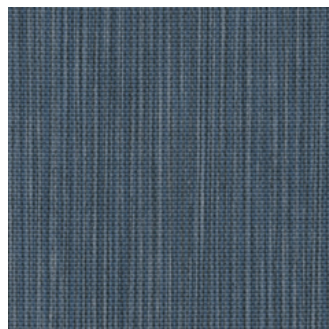
LANDLINE



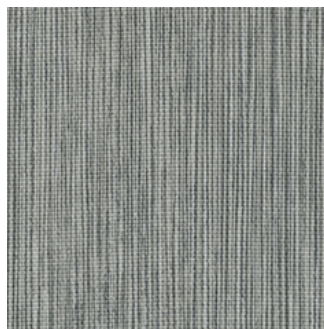
OUTLINE



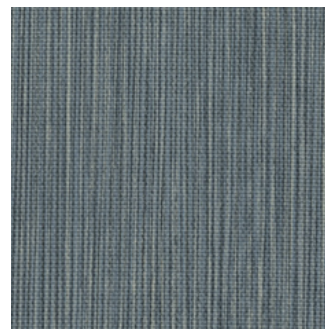
PIPELINE



STREAMLINE



STRINGLINE



TIMELINE



Scan the QR Code with your device
to view the Linea range and
order free sample cuttings.

SPECIFICATIONS

Application	Heavy Commercial, Healthcare, Hospitality, Screens & Marine Upholstery
Abrasion Resistance	Test method AS 2001.2.25 (12kPa) Martindale Method No significant wear after 50,000+ Rubs
Anti Microbial & Anti Bacterial	Sanitised to inhibit growth of Mould and Bacteria
Composition	85% PVC 15% Polyester Gauge: 1.0mm Roll Length: 30m Roll Width: 137cm
Colour Fastness to Light	UV Stabilised and suitable for indoor/outdoor use. Light Fastness rating 6-7 ISO 105-B02-1994 (Grey Scale 1-5)
Colour Fastness to Bleach	Tested to Australian Standards (AS2001.4) No change of colour rating 4-5
Meets FR Standards for use in Commercial Areas:	FR Properties: Tested to Australian Standards (AS1530.3) Spread of Flame: 0 Smoke Developed: 5, IMO Standards A. 652(16) AS/NZS 3837
Reach Certification	Compliant with the EU Reach regulation (EC) No 1907/2006 The Reach Certification restricts the use of harmful chemicals that potentially have an impact on both human health & the environment. Linea is Phthalate Free. No Formaldehyde, Lead, Mercury or Chromium used in the manufacturing process.
Protech	A protective top surface allowing easy removal of stains and dirt
Care & Cleaning	Most stains can be cleaned using warm soapy water, followed by clean water rinsing. Moderate scrubbing with a medium bristle brush will help loosen soiling from the embossed surface. Failure to follow cleaning instructions may permanently stain and reduce the life of the vinyl.