



HERRINGBONE COOLWATER & SESAME

SPECIFICATIONS

Composition: 90% Polyester 10% Polyurethane

Usage: Heavy Commercial - Health/Hospitality

HR: 0cm **VR:** 0cm

Usable Width: 140cm - 142cm

Care Label: E

AS1530.3 Flammability: Yes

Available Colours: 32

COLOURWAYS



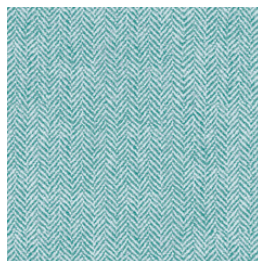
ARMOUR



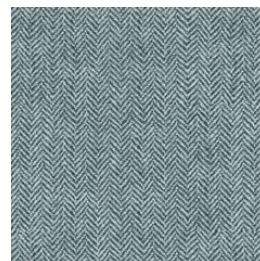
BERRY



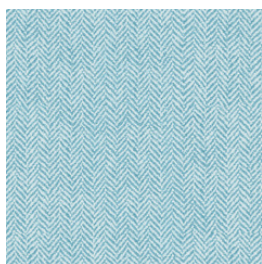
BUSHLAND



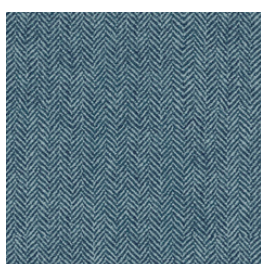
CAPRI



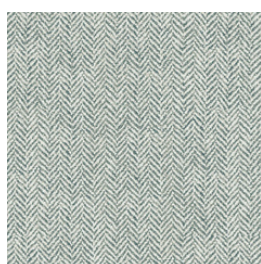
CHARCOAL



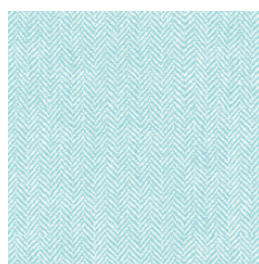
COOLWATER



DENIM



DOVE



DUCK EGG



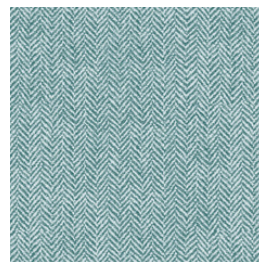
HAYSTACK



HOPPS



INDIGO



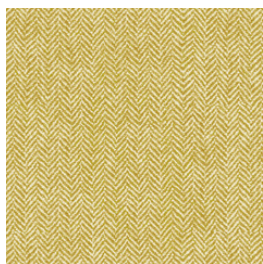
LAKEHOUSE



LAMA



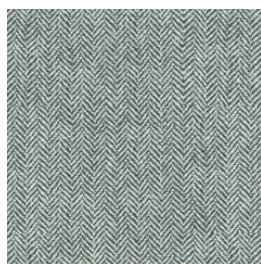
LAWN



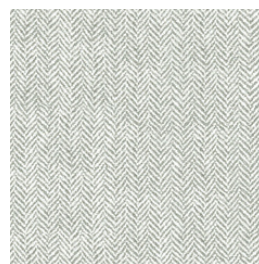
MUSTARD



NUDIE



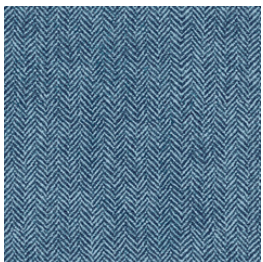
OWL



PEPPER



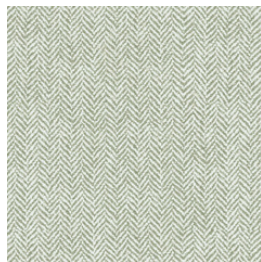
PINOT



RIVIERA



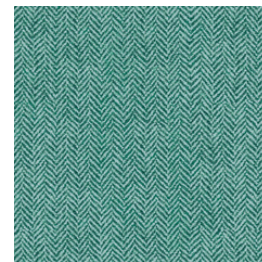
SAND



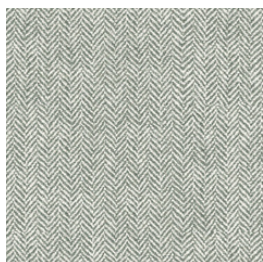
SEAFOAM



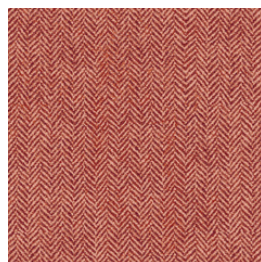
SESAME



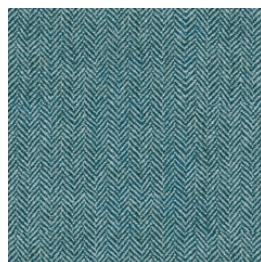
SPEARMINT



STATIC



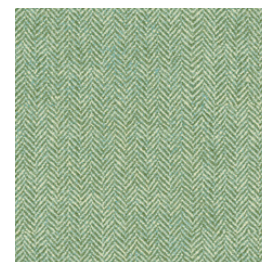
TANGO



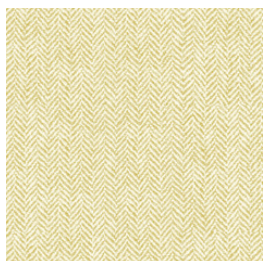
TEAL



ULURU



WASABI



ZEST



ZUCCA



WORTLEY
Textiles since 1953

Scan the QR Code with your device
to view the Herringbone Collection and
order free sample cuttings.

COMPOSITION	Digitally Printed on Waterproof Upholstery
BASE CLOTH OPTIONS	Weave 90% Polyester 10% Polyurethane Chenille 90% Polyester 10% Polyurethane Suede 90% Polyester 10% Polyurethane
FABRIC WEIGHT	Weave 395 gsm Chenille 460 gsm Suede 427 gsm
WOVEN FABRIC FINISHES	Surface finish –Stain repellent Fluorocarbon C6 technology. Kinder to the environment – PFOA/PFOS free. Back coating (Waterproof) – Water based Polyurethane coating, heavy metal free.
P.U FABRIC FINISH	Surface finish– 100% High Density Polyurethane Kinder to the environment – Phthalate free, No Formaldehyde or plasticizers used in the manufacturing process.
PRINTED WIDTH	140cm to 142cm
ABRASION RESISTANCE	Martindale Abrasion Method Test method AS 2001.2.25 (12kPa) (No significant wear after completion of abrasion test) Weave 84,000 + rubs Chenille 90,000 + rubs Suede 41,000 + rubs
F.R STANDARDS FOR USE IN COMMERCIAL AREAS	Tested to Australian standards AS1530.3-1999 Spread of Flame Index: 0 Smoke Developed Index: 5 I.M.O Standards A.652 (16) AS/NZS3837 <i>*Fire test certificate available upon request.</i>
ANTI-BACTERIAL	Treated for bacterial protection, resistant to bacteria growth – AATCC100-2102
BLEACH CLEANABLE	Test to Australian standards (AS 2001.4.11) Class 4-5 – No change of colour Acceptable bleach cleaning – 1 part bleach, 10 parts water & rinse thoroughly. High concentration of bleach or long term exposure to bleach is not recommended.
COLOURFASTNESS TO LIGHT	Tested to Australian standards AS 2001.4.21-2006 Final Rating 4. Fusion is suitable for indoor use only. Protect from direct sunlight.
ENVIRONMENTAL	Fusion fabrics are free of potentially harmful levels of Formaldehyde, heavy metals, PFOA, PFOS, Phthalates, Phenols. Fusion fabrics can be recycled. Austex produce only high quality product, using safe fabrics and manufacturing practices that minimize pollution, waste, energy and water usage.
USAGE	Waterproof upholstery fabrics, suitable for Heavy Commercial, Hospitality and Healthcare applications.
CARE & MAINTENANCE	Regular maintenance — Vacuum fabric regularly to remove crumbs, dust and dirt to avoid buildup. Spills — Soak up spills as quickly as possible using a dry absorbent cloth. Persistent stains — Most stains can be cleaned using a damp cloth. For persistent stains use a warm soapy water solution. Moderate scrubbing with a soft bristle brush and soapy solution will help loosen soiling from the fabric surface. It is very important to remove all soap residue with clean water. Fusion can also be cleaned with a bleach solution (1 part bleach solution 10 parts water) rinse with clean water & dry with clean towel to remove all chemical residue. Do not use solvent based cleaners. Failure to follow cleaning instructions may permanently stain and reduce the life of the fabric.